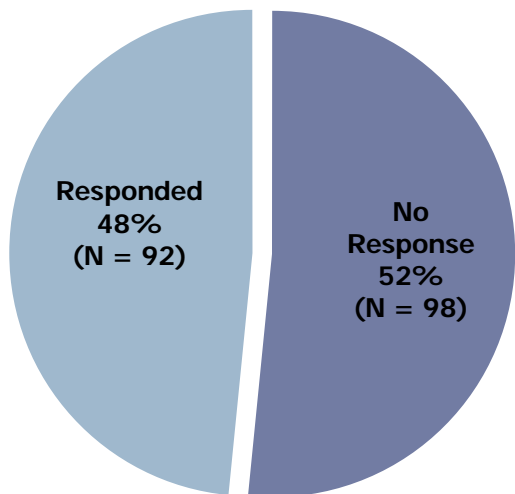
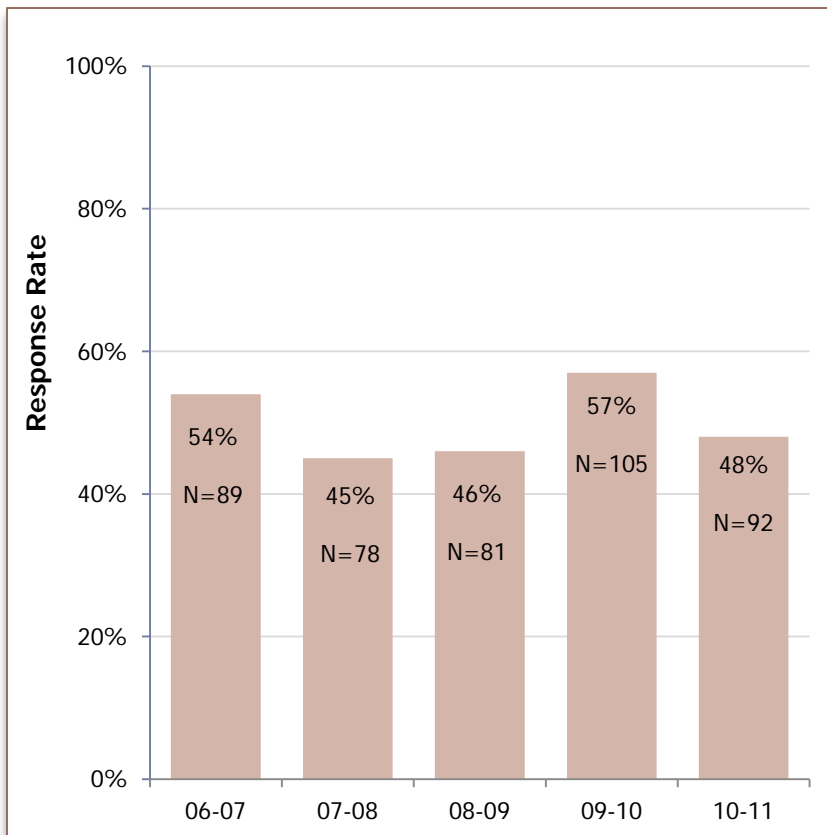


2010-11 Response Rate

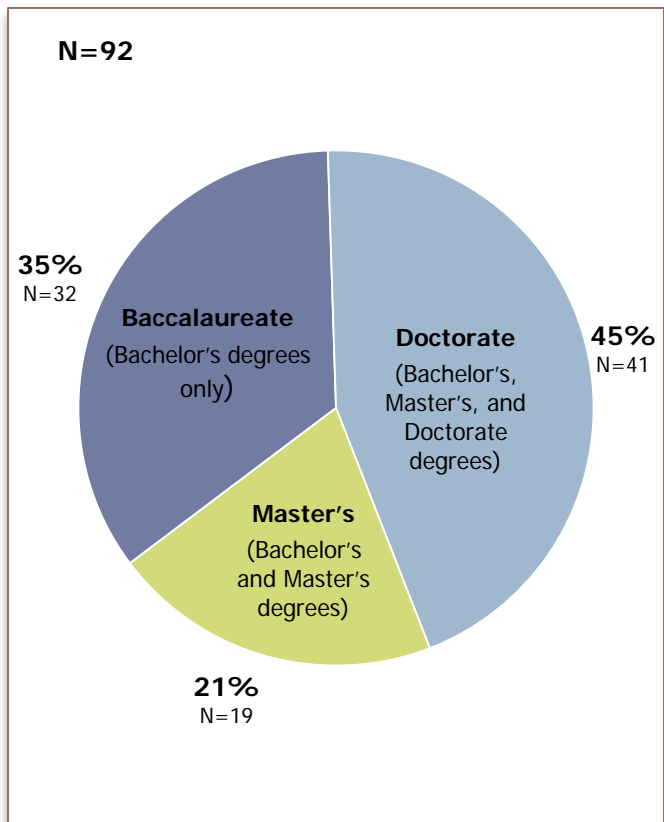


Trend in Survey Response Rate

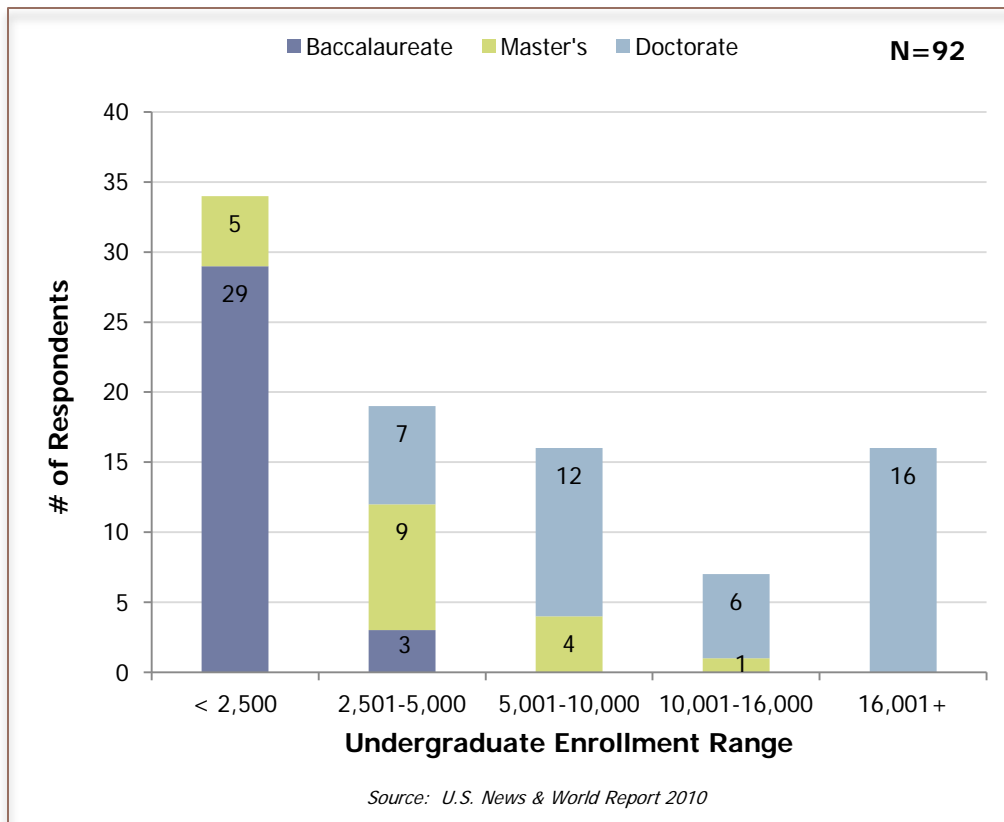


		N =	% of Total Survey Respondents
Consortium Status	Associate	40	43%
	Member	52	57%
School Type	Public	20	22%
	Private	72	78%

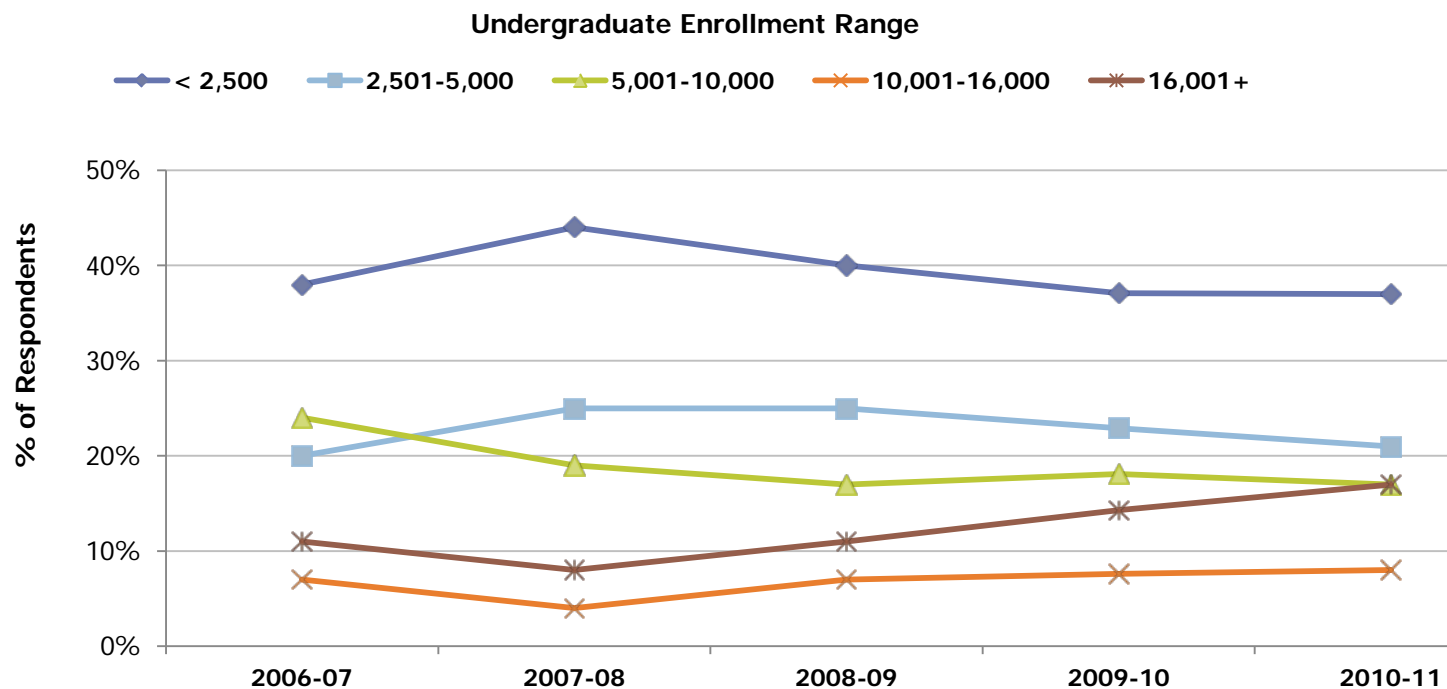
Degree-Granting Status



Respondents by Institutional Size and Type



Trends in Respondent Composition by Institutional Size

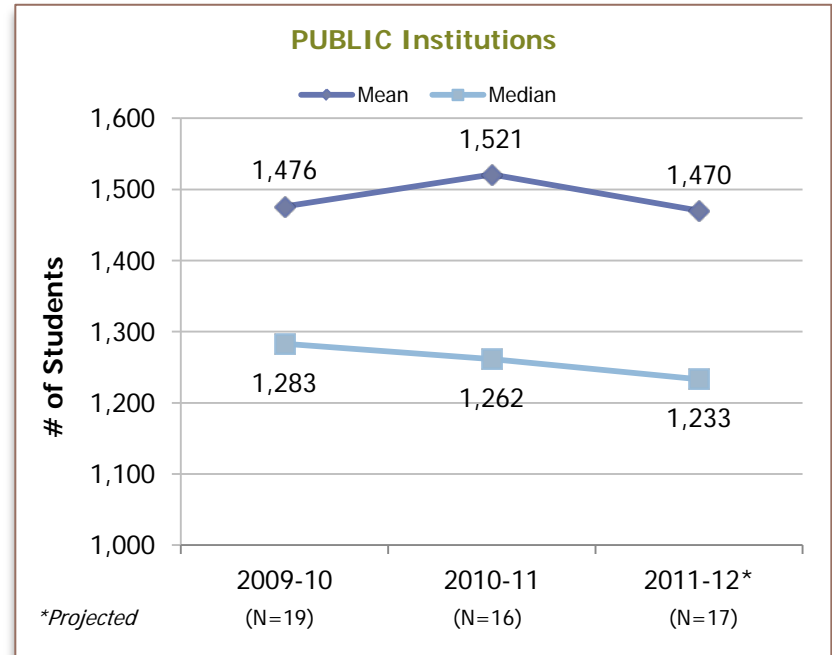
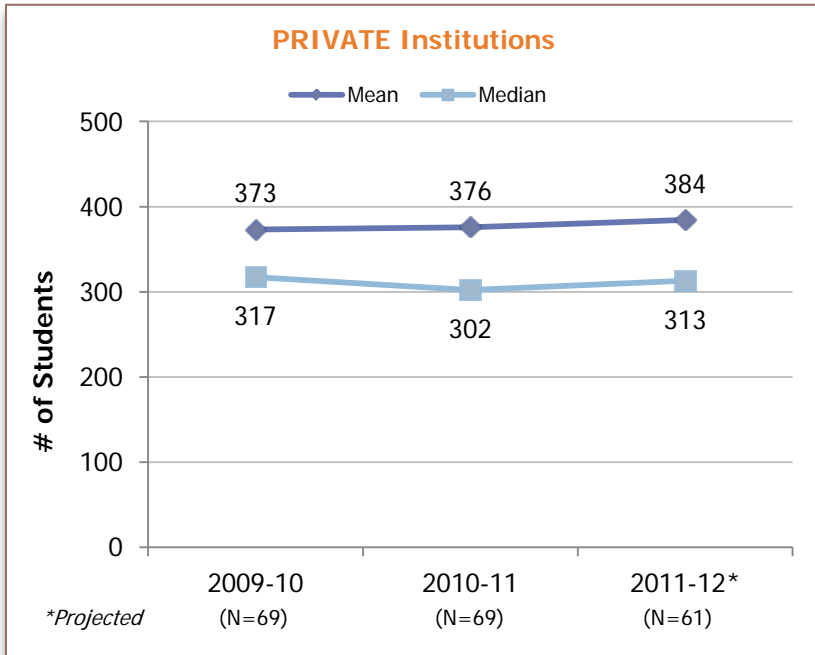


2006-07 (N=89) 2007-08 (N=78) 2008-09 (N=80) 2009-10 (N=105) 2010-11 (N=92)

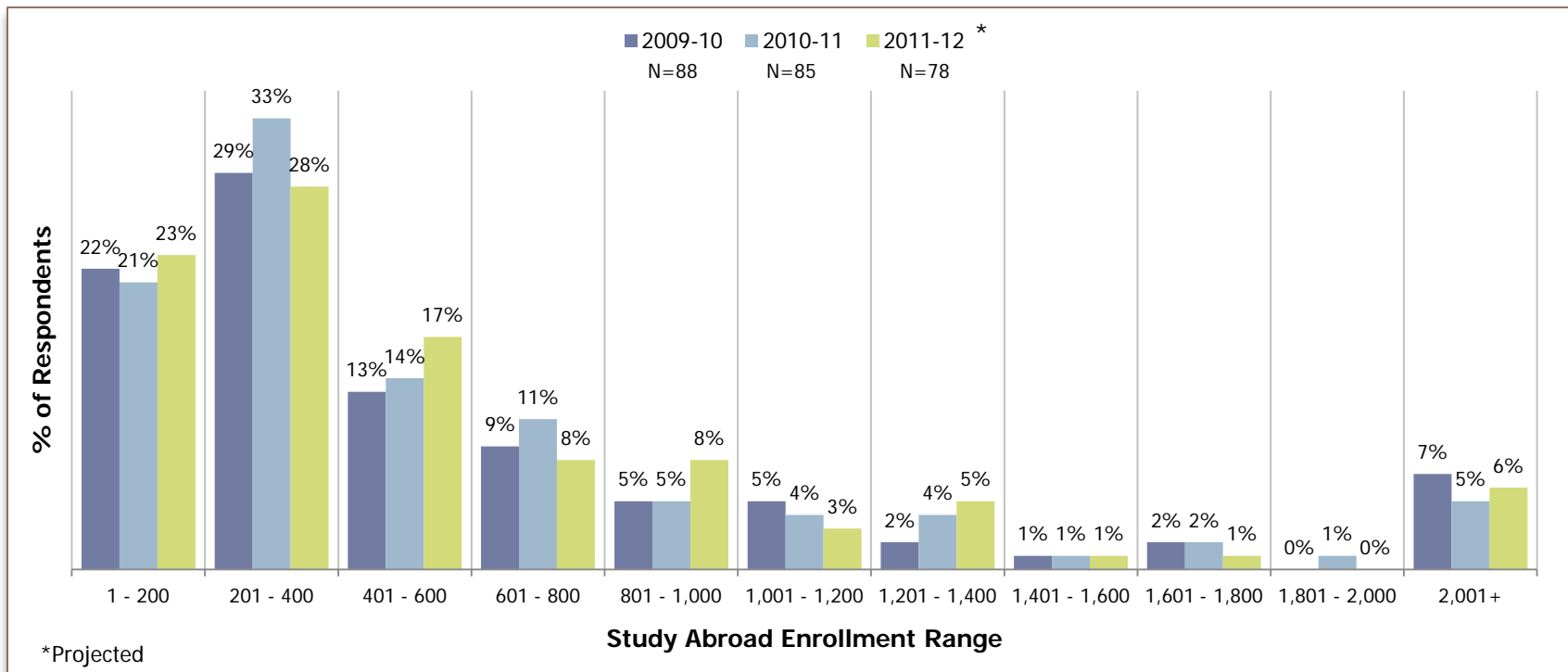
Undergraduate Enrollment Range*	2006-07	2007-08	2008-09	2009-10	2010-11
< 2,500	38%	44%	40%	37%	37%
2,501-5,000	20%	25%	25%	23%	21%
5,001-10,000	24%	19%	17%	18%	17%
10,001-16,000	7%	4%	7%	8%	8%
16,001+	11%	8%	11%	14%	17%

* Source: U.S. News & World Report, 2006 - 2010

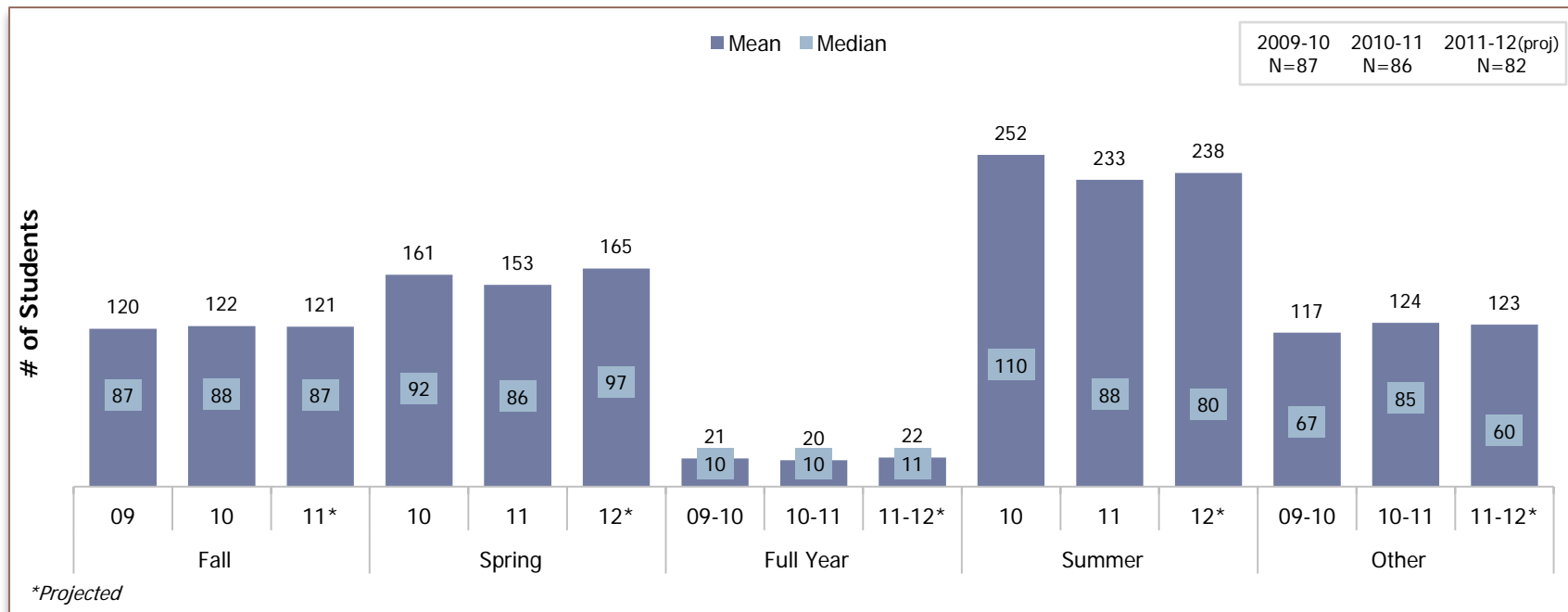
Average Study Abroad Enrollment by Private/Public Status



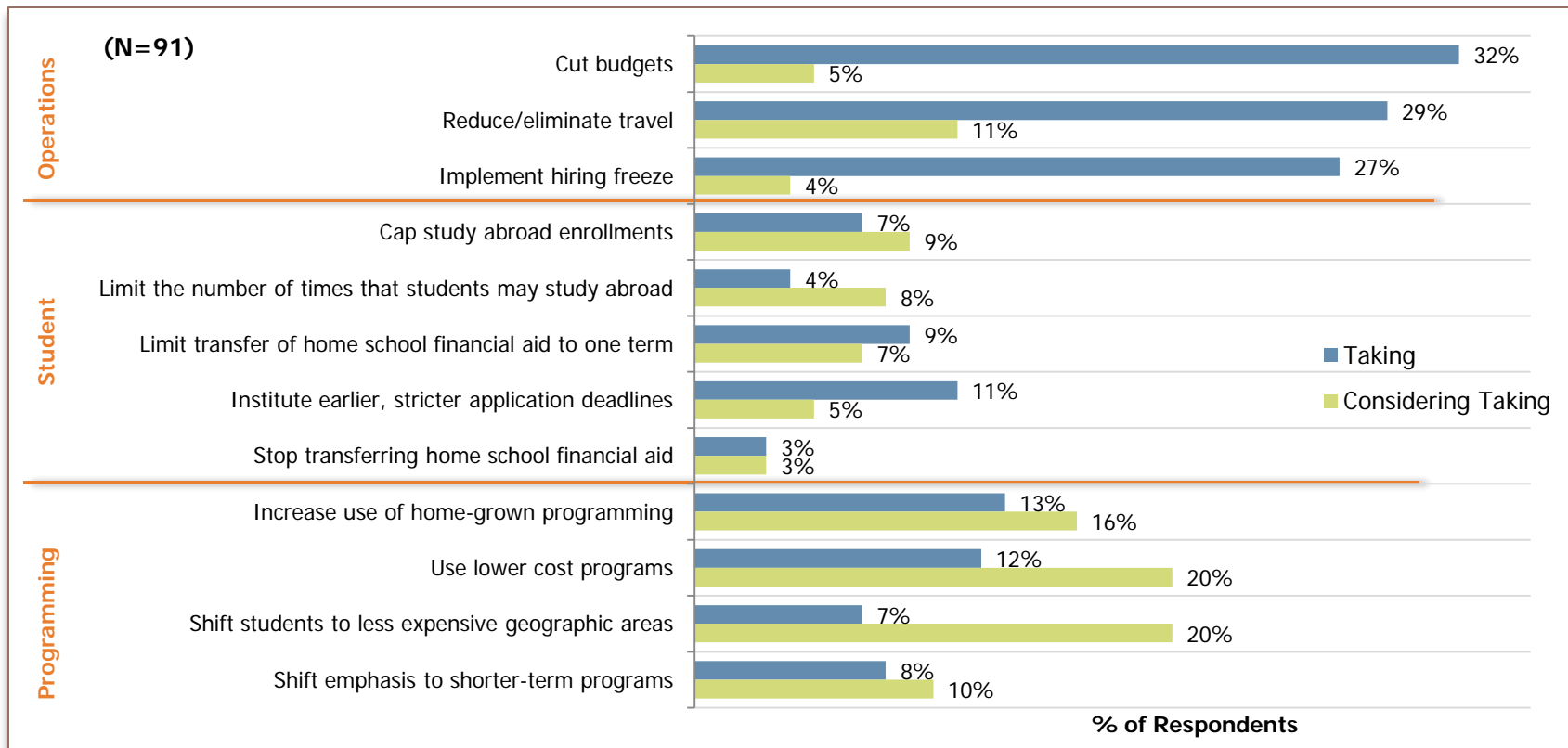
3-Year Trend/Forecast in Total Study Abroad Enrollments



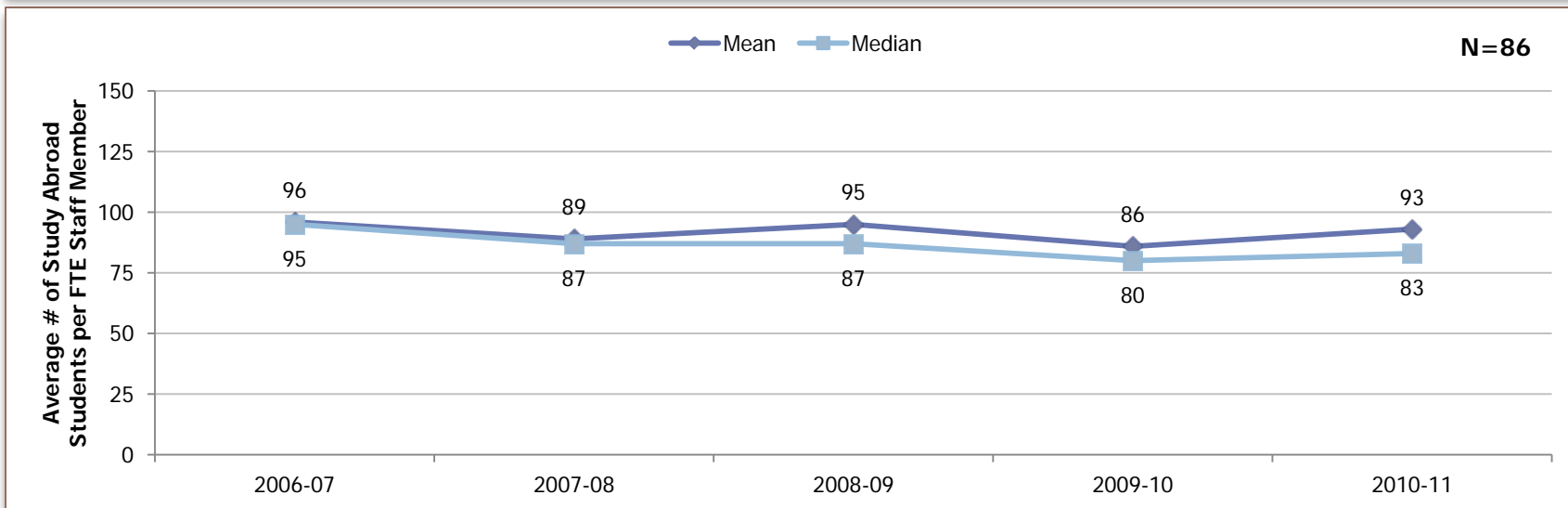
3-Year Enrollment Trend/Forecast by Term



Policy Actions Institutions are Taking or are Considering Taking



Trends in Student-to-Staff Mean and Median Ratios



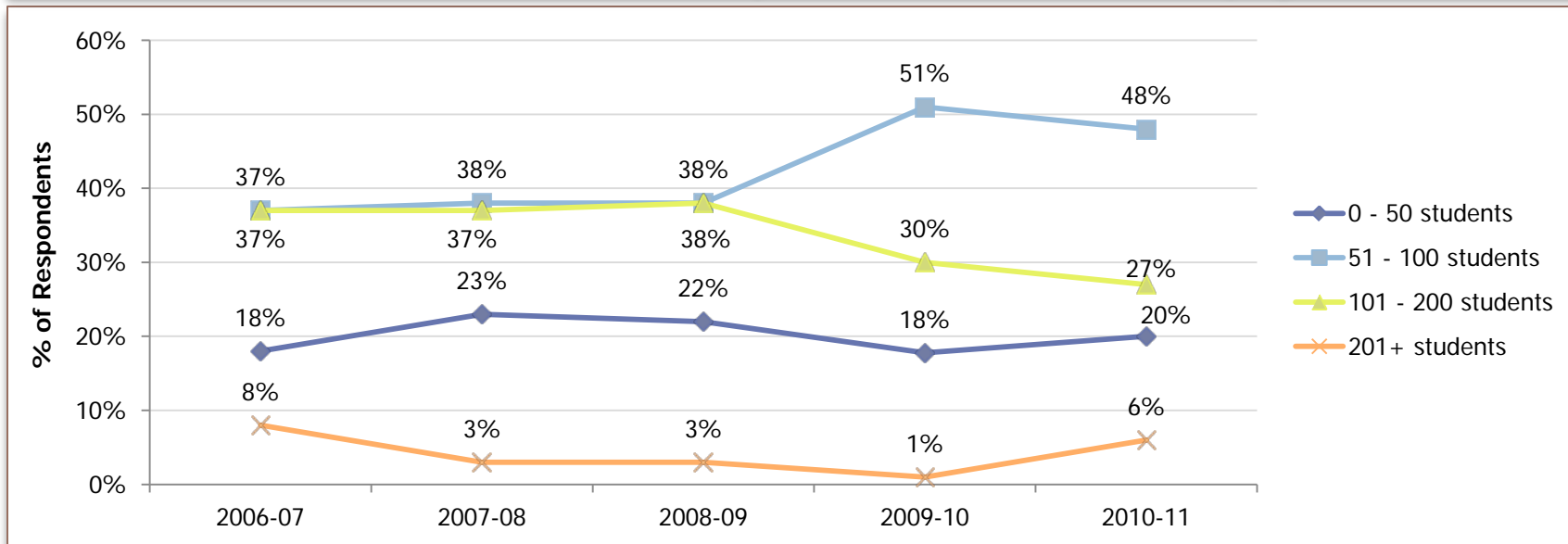
Trends in Study Abroad Office Staff Size by Average FTE		06-07 (N=84)	07-08 (N=71)	08-09 (N=79)	09-10 (N=101)	10-11 (N=89)
FTE	Mean	4.2	5.7	6.0	5.8	6.7
	Median	2.9	3.8	4.4	4.1	5.0

FTE ranged between 1 and 35

Note: Full Time Equivalent (FTE) is the sum of full-time staff (40 hours/week) and paid part-time equivalents. Part-time equivalent was calculated by adding the total hours/week worked by all part-time staff and dividing by 40.

Example: If a school has two part-time employees who each work 20 hours/week, for a combined 40 hours/week, then those two people would count as one unit of total staff.

Trends in Student-to-Staff Ratio by Number of Students Studying Abroad



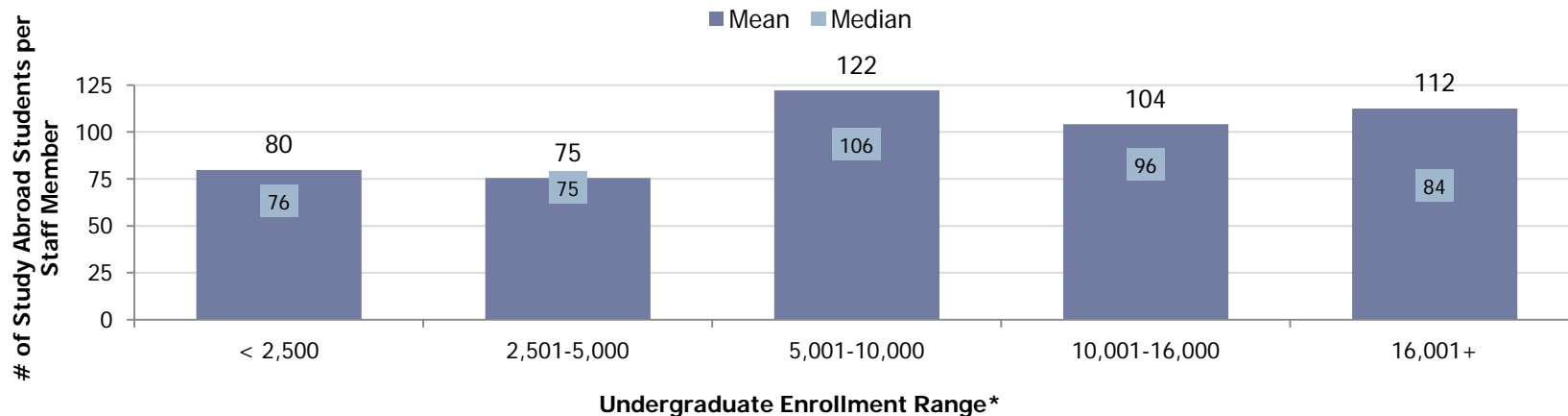
Trends in Percentage of Respondents by Student-to-Staff Ratio Range

Range of Study Abroad Students per Staff FTE	% of Respondents within Ratio Range				
	06-07 (N=84)	07-08 (N=71)	08-09 (N=79)	09-10 (N=88)	10-11 (N=86)
0 - 50 students	18%	23%	22%	18%	20%
51 - 100 students	37%	38%	38%	51%	48%
101 - 200 students	37%	37%	38%	30%	27%
201+ students	8%	3%	3%	1%	6%

Average Study Abroad Student-to-Staff Ratio by Institutional Size

Student-to-Staff Ratio, 2010-11

N=86

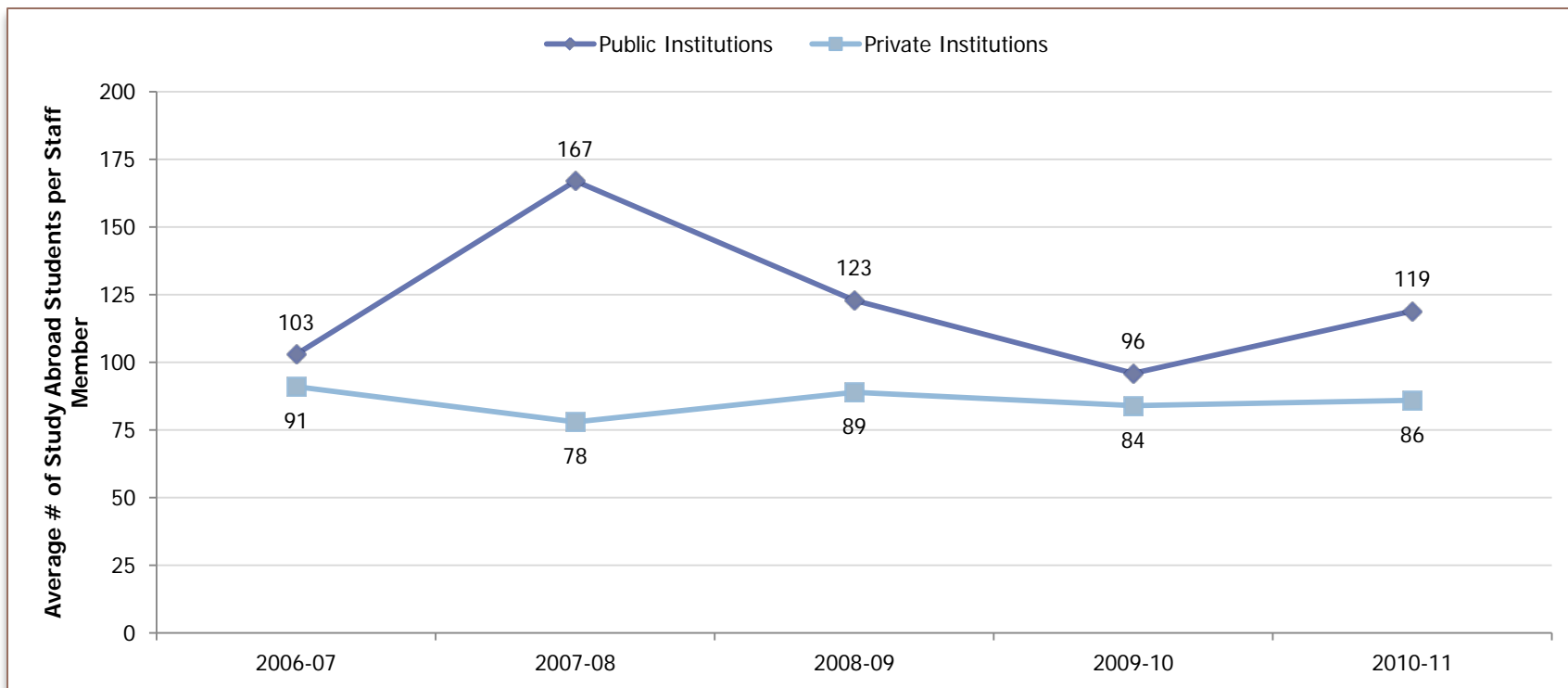


Trends in Average Student-to Staff Ratio by Institutional Size

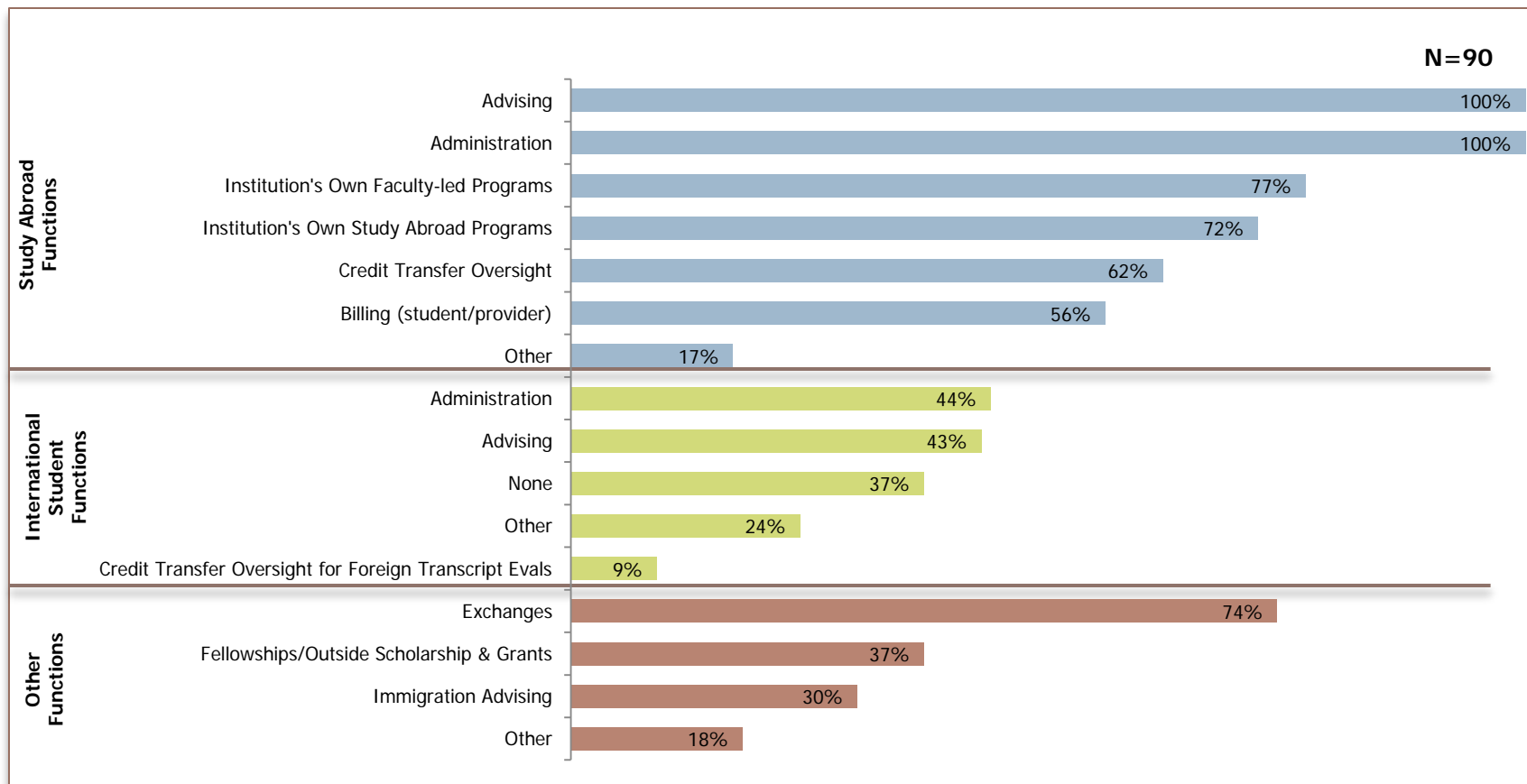
Undergraduate Enrollment Range*	Number of Students per Staff Member				
	06-07 (N=84)	07-08 (N=71)	08-09 (N=79)	09-10 (N=88)	10-11 (N=86)
< 2,500	98	98	79	88	80
2,501 - 5,000	88	95	87	66	75
5,001 - 10,000	114	61	107	93	122
10,001 - 16,000	223	69	179	84	104
16,000+	83	94	97	106	112

* Source: U.S. News & World Report 2010

Public/Private Trends in Average Study Abroad Student-to-Staff Ratios



Scope of Study Abroad Office Functions, 2010-11



Scope of Office Functions by Institutional Size, 2010-11

		Estimated Undergraduate Enrollment Range*				
		600-2,500 (N=34)	2,501-5,000 (N=18)	5,001-10,000 (N=15)	10,001-16,000 (N=7)	16,001+ (N=16)
Study Abroad Functions	Advising	100%	100%	100%	100%	100%
	Administration	100%	100%	100%	100%	100%
	Credit Transfer Oversight	68%	44%	80%	57%	56%
	Billing (student and/or provider)	41%	39%	87%	71%	69%
	Institution's Own Study Abroad Programs	62%	67%	73%	100%	88%
	Institution's Own Faculty-led Programs	65%	89%	67%	86%	94%
	Other	21%	11%	13%	14%	19%
International Student-related Functions	Advising	41%	56%	20%	71%	44%
	Administration	41%	61%	20%	71%	44%
	Credit Transfer Oversight for Foreign Transcript Evals	18%	6%	7%	0%	0%
	None	47%	28%	40%	14%	31%
	Other	18%	22%	40%	29%	25%
Other Functions	Immigration Advising	29%	50%	13%	43%	19%
	Fellowships/Outside Scholarships & Grants	44%	29%	40%	14%	38%
	Exchanges	56%	78%	87%	86%	94%
	Other	26%	6%	20%	14%	13%

*Source: U.S. News & World Report 2010

Trends in Scope of Study Abroad Office Functions

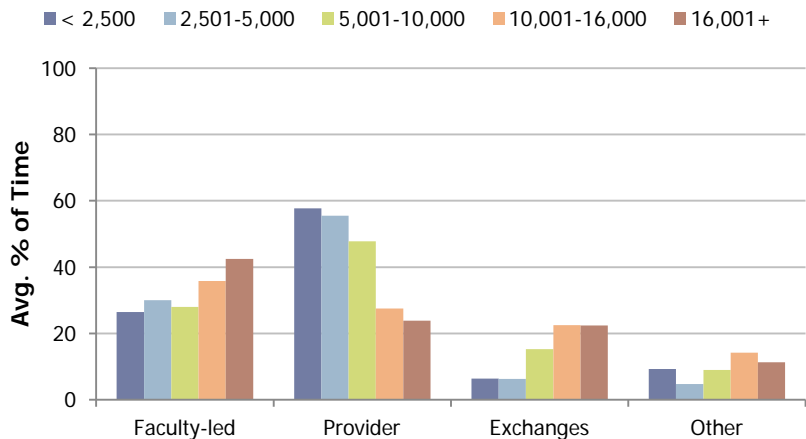
Office Function	Percentage of Respondents				
	06-07 (N=89)	07-08 (N=78)	08-09 (N=81)	09-10 (N=101)	10-11 (N=90)
Study Abroad Advising/Administration	100%	100%	100%	100%	100%
Manage Institution's Own Faculty-led Programs*	-	64%	74%	75%	77%
Exchanges	73%	74%	66%	75%	74%
Manage Institution's Own Study Abroad Programs*	-	73%	78%	70%	73%
Credit Transfer Oversight (study abroad only)	54%	54%	62%	62%	62%
Study Abroad Billing (student and/or provider)	-	53%	58%	51%	56%
International Student Advising	35%	37%	37%	38%	43%
Fellowships/Outside Scholarships & Grants	37%	29%	33%	28%	30%
Immigration Advising	30%	32%	30%	26%	37%
Credit Transfer Oversight for Foreign Transcript Evals	17%	18%	6%	8%	9%
Other	27%	12%	25%	23%	18%

*Response stem added in 2007-08

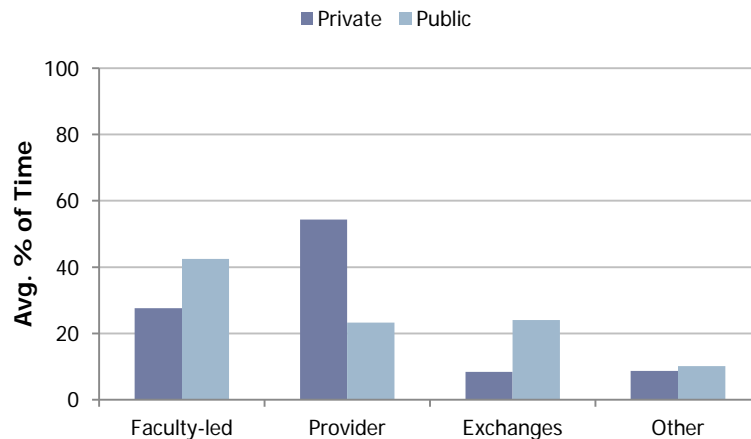
Percentage of Staff Time Spent Managing Different Types of Programs, 2010-11

Program Management by:

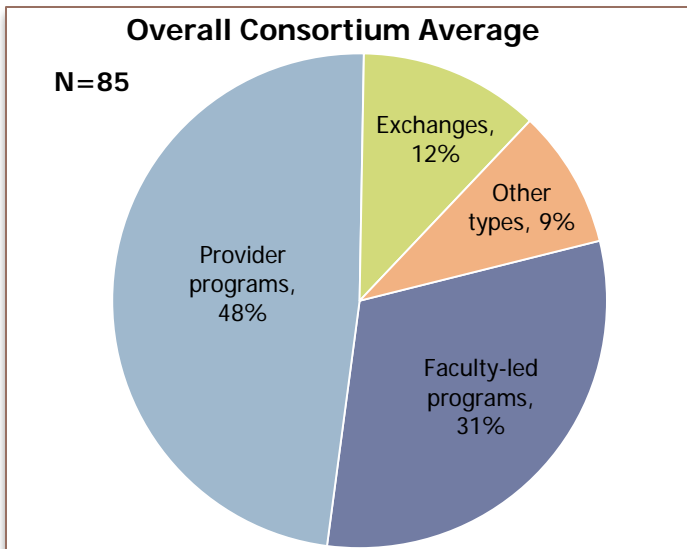
Institutional Size



Institutional Type

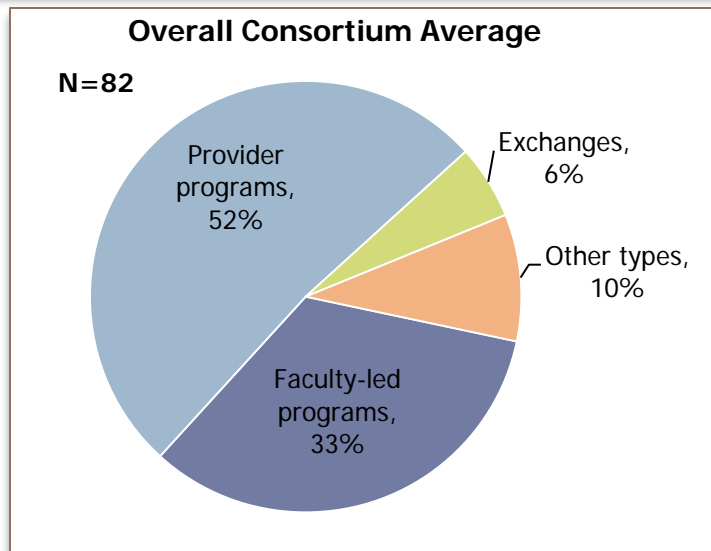
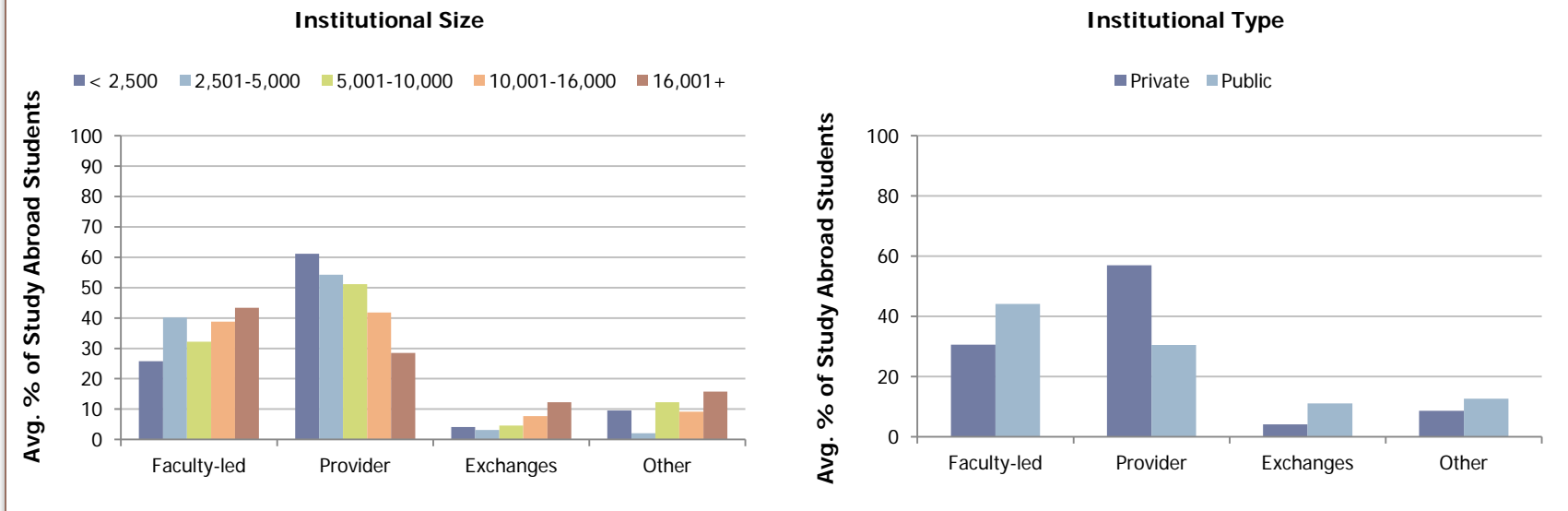


Overall Consortium Average

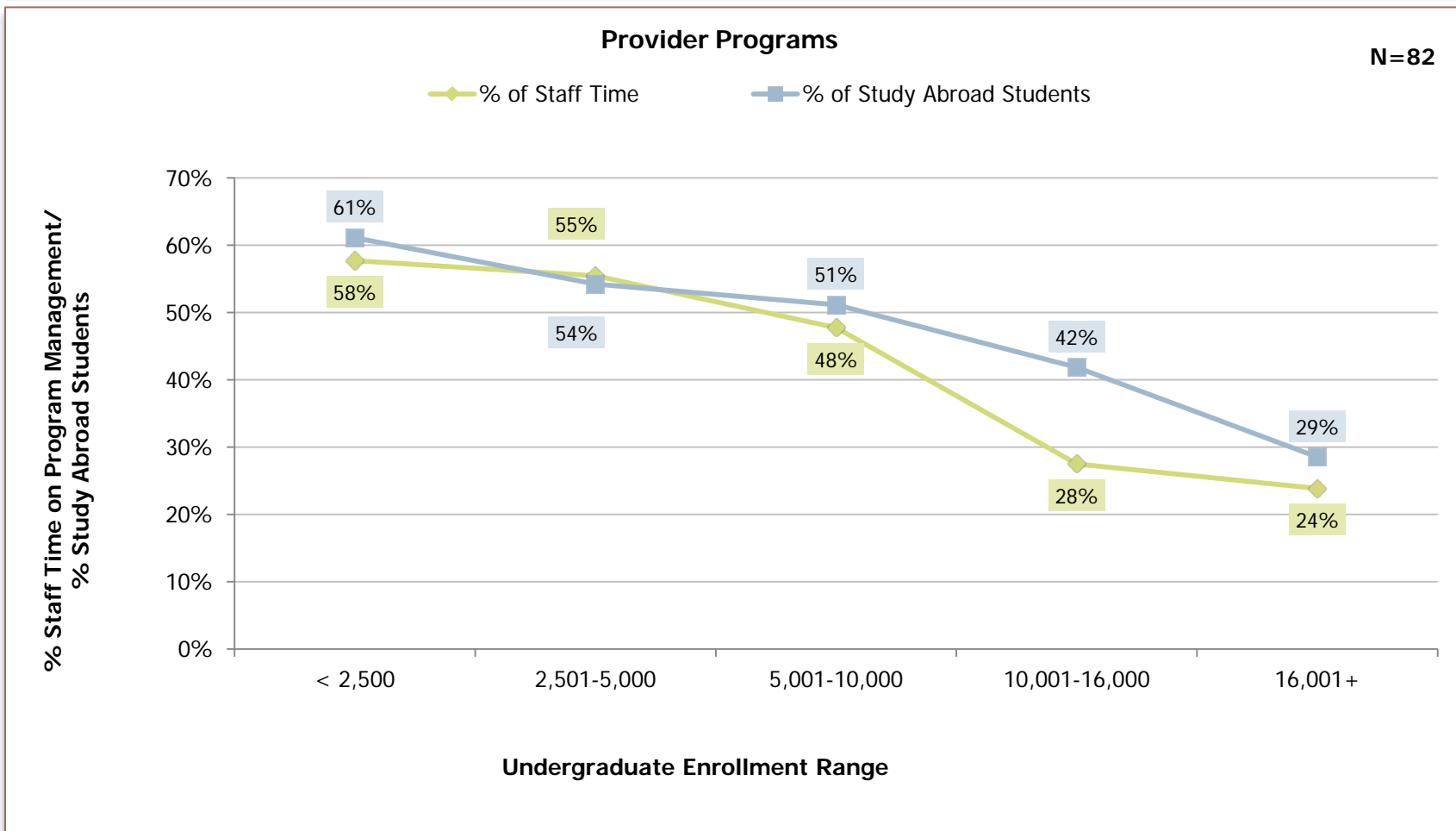


Percentage of Study Abroad Students Enrolling in Different Types of Programs, 2010-11

Student Enrollment in Different Program Types by:



Returns in Study Abroad Enrollments to Program Management Time by Institutional Size



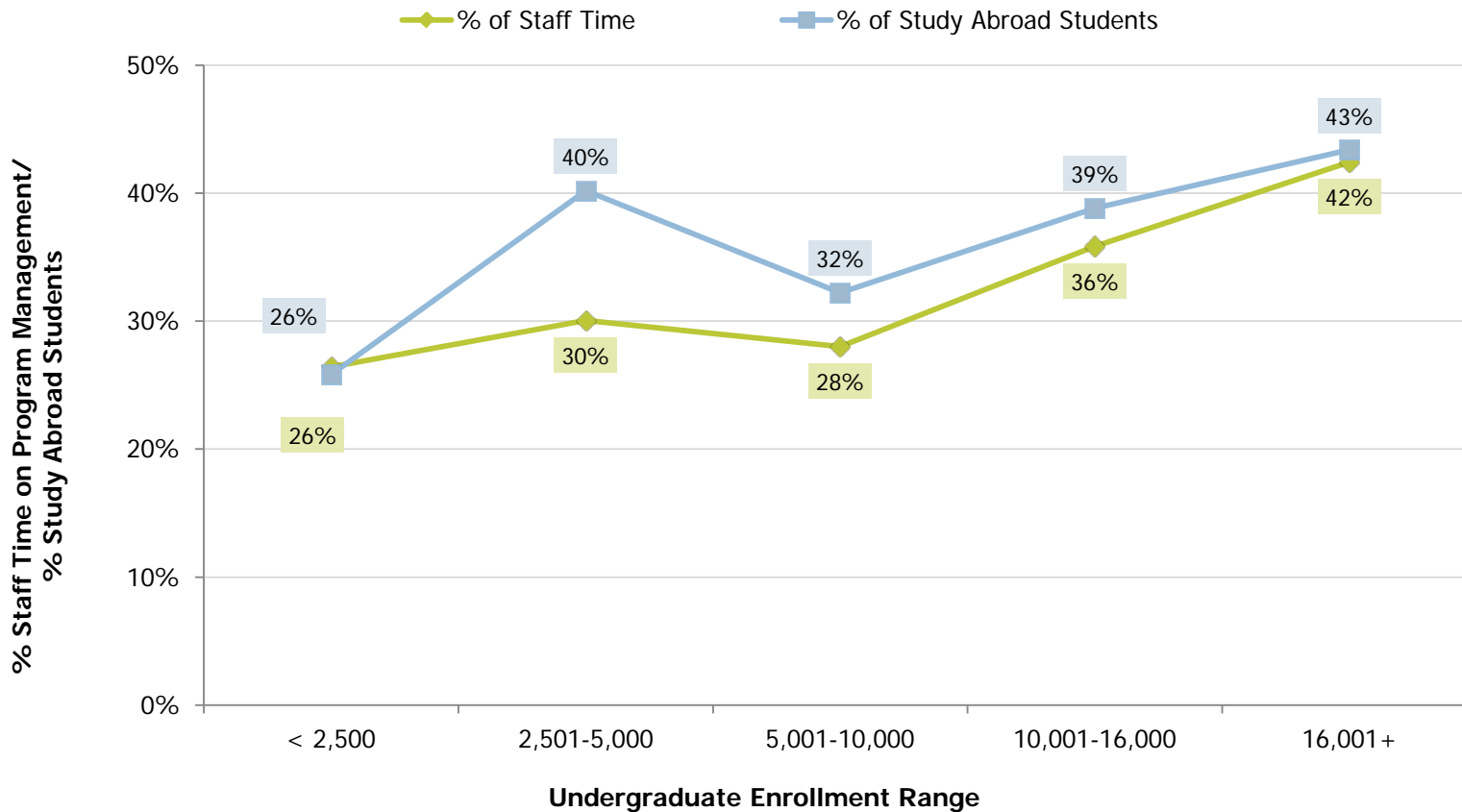
Understanding the Data

- This chart shows the percentage of Study Abroad Office staff time expended on managing provider programs compared to the percentage of study abroad students that participate in provider programs, based on the size of the institution.

Returns in Study Abroad Enrollments to Program Management Time by Institutional Size

Faculty-led Programs

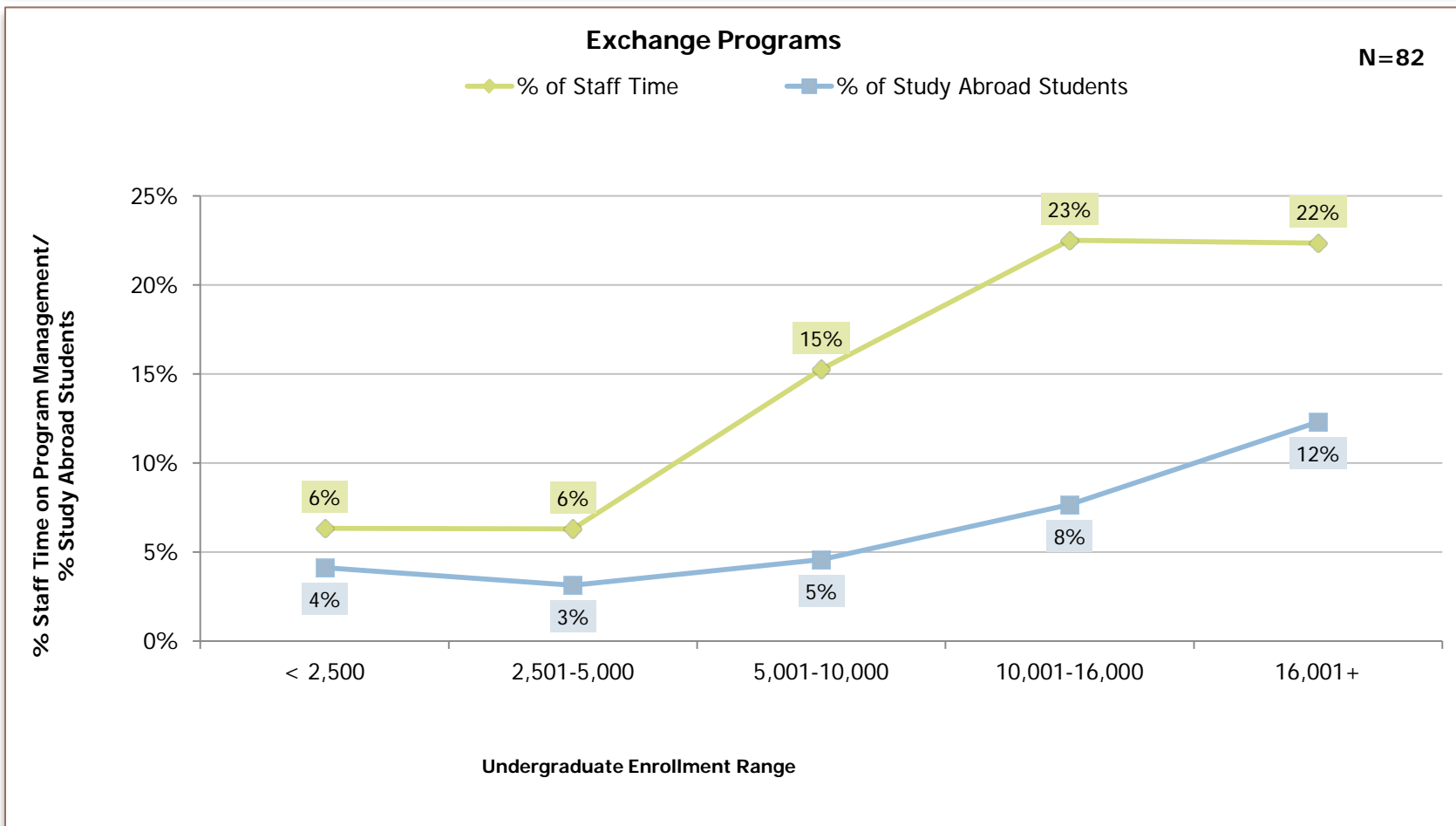
N=82



Understanding the Data

- This chart shows the percentage of Study Abroad Office staff time expended on managing faculty-led programs compared to the percentage of study abroad students that participate in faculty-led programs, based on the size of the institution.

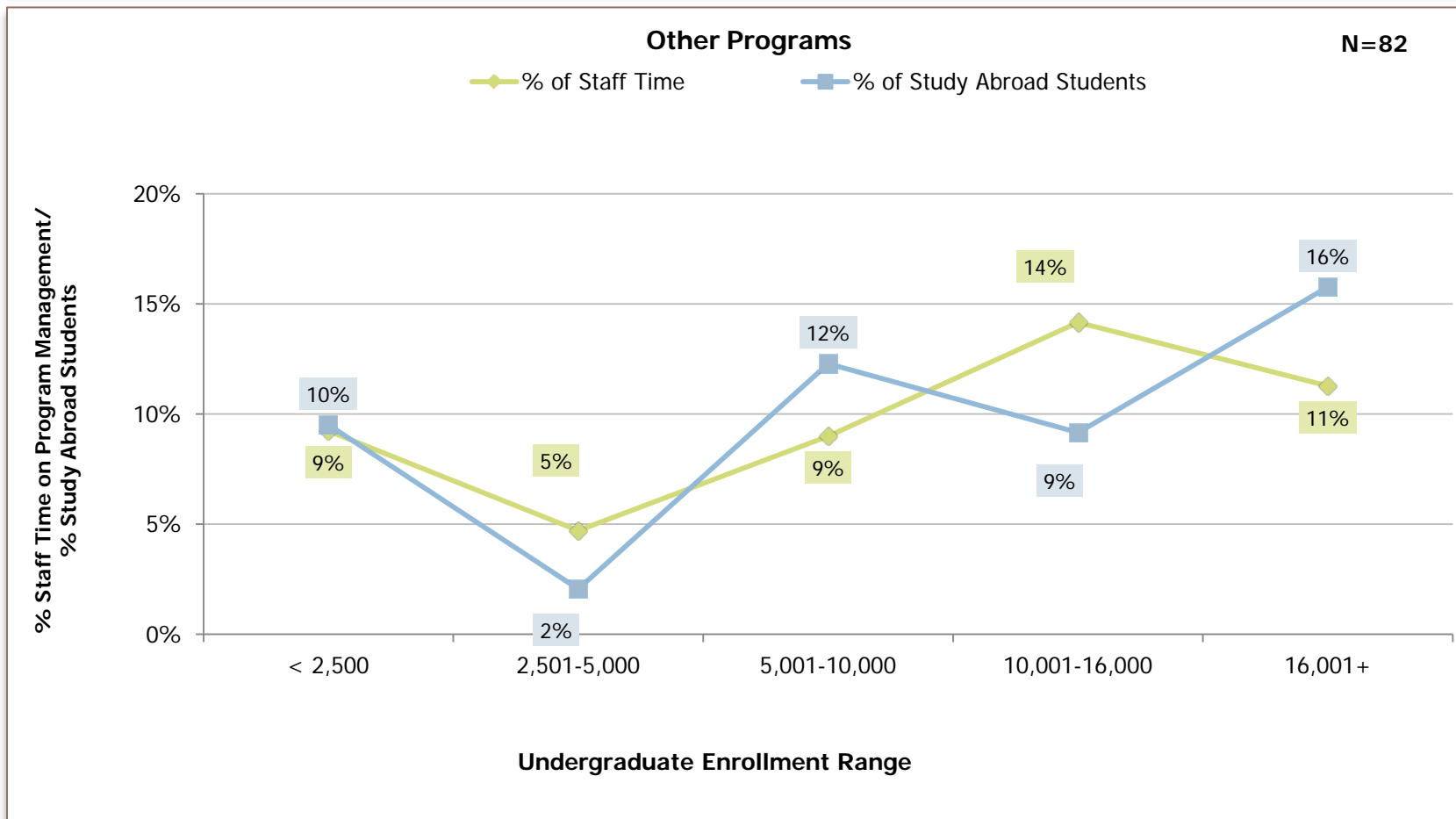
Returns in Study Abroad Enrollments to Program Management Time by Institutional Size



Understanding the Data

- This chart shows the percentage of Study Abroad Office staff time expended on managing exchange programs compared to the percentage of study abroad students that participate in exchange programs, based on the size of the institution.

Returns in Study Abroad Enrollments to Program Management Time by Institutional Size



Understanding the Data

- This chart shows the percentage of Study Abroad Office staff time expended on managing “other” programs compared to the percentage of study abroad students that participate in “other” programs, based on the size of the institution.